

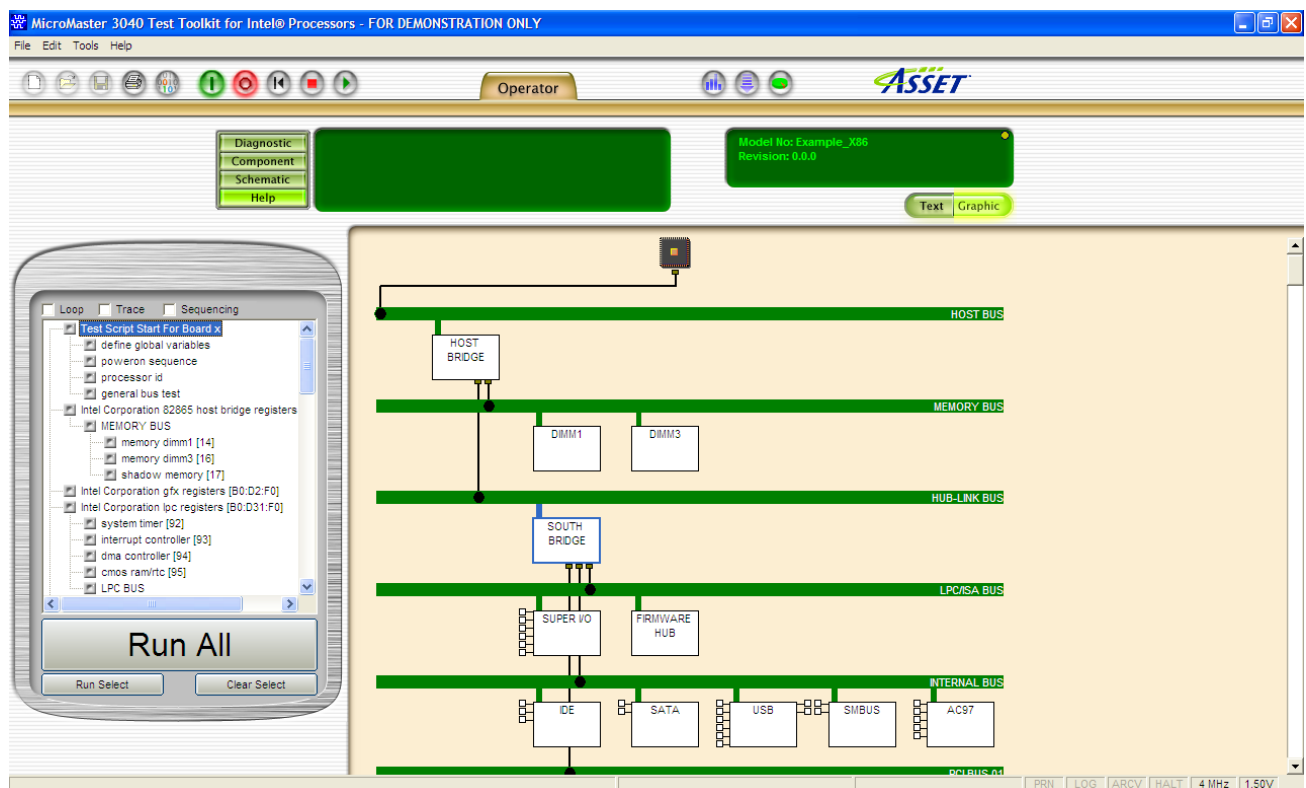
ASSET INTERTECH

PROCESSOR-CONTROLLED TEST MANUFACTURING STATION

ASSET InterTech is excited to introduce Processor-Controlled Test (PCT) Manufacturing Station. There are times when a great product comes along in only one flavor and you wished that someone would have listened. You don't always need all the power in the world; you just need a tool that has been adjusted to the size of the task at hand. We'll we have listened. So for manufacturing testing we are announcing a test station just for them. This test station eliminates all the complexity of the PCT Development Station or the PCT Diagnostic & Repair Station and focuses on the end user. The PCT Manufacturing Station is designed to run the

test profiles developed in the PCT Development Station but that's it. No fancy bells or whistles. And yes, you still get the same powerful diagnostic messages from the test should a UUT fail a test but the interface is clean and elegant. With this reduction in complexity we can offer a lower price.

In addition to the changes in the interface we have also added the ability to use the product in a Network Campus or Network WorldWide setting. To find out more about the Network Campus and Network WorldWide portion of this tool please refer to



http://www.asset-intertech.com/download/PCT_Networking_features.pdf.

The PCT Manufacturing Station consists of the Toolkit Software. In order to control the UUT (Unit Under Test) from the software you will also need the controlling hardware. Refer to the below figure for a description of the hardware components. The software components consist of the following elements:

- Operator Mode – This is the area of the user interface provides the test engineer, technician, and operator the same view of the UUT and what the test profile is executing. The operator can choose to view the test execution in a graphic format or text format whichever is best for the user. You can start and stop the UUT as necessary. If further detail is needed on a given failure, the operator can switch between Diagnostic messages, Component messages and Help message to gain more information about the failure.

For complete description of the hardware components please refer to

http://www.asset-intertech.com/download/PCT_debug_hardware.pdf

Processor-Controlled Test Hardware Components List



Note* Items 1 and 8 are not provided by ASSET

- 1 Control PC *
- 2 PCI -200EJ Controller
- 3 PCI to Processor POD Cable
- 4 Processor POD
- 5 I/O Emulation Unit
- 6 I/O Plug-in Cards
- 7 I/O Feedback Cable
- 8 UUT